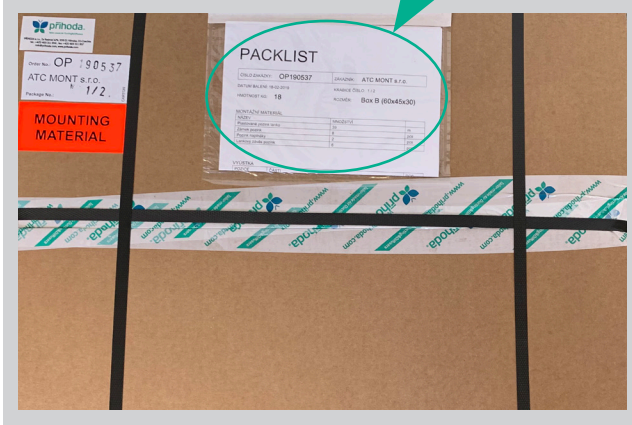


FABRIC DUCTING AND DIFFUSERS

GUIDE TO YOUR DELIVERY

The basic document that will help you navigate through your delivery is the **PACKLIST**, which is located in an envelope attached to each box or package.



When accepting a delivery from the carrier, carefully check that the number of **PACKAGES** matches the data in the packlists.

PACKLIST		
ORDER NUMBER: OP190011	CUSTOMER: Priya India	
DATE OF PACKING: 06-02-2019	PACKAGE NUMBER: 1 / 8	
WEIGHT KG: 200	SIZE: 120x80x120	
DIFFUSER		
POSITION	PARTS	PCS
1	1,2,3,4,5	1
2	1,2	1
3	1,2	1
4	1,2	2
5	1,2	2
6	1,2	2
7	1,2,3,4	2
8	1,2,3	2

RECOMMENDED PROCEDURE FOR UNPACKING A DELIVERY

1

First, seek out a package/box marked with a yellow “DOCUMENTS” label. It contains full documentation for the given order (mounting instructions, warranty conditions, material list, maintenance manual, drawings) and mounting gloves. Before installation, make sure to read through all of these documents.

DOCUMENTS

2

Find the mounting material: all packages contain mounting material (profiles, connectors, hangers, wires, turnbuckles etc.) – marked with a pink label.

Mounting material may be packed separately or together with textile parts. At the customer's request, it may also be sent in advance.

MOUNTING MATERIAL

Profiles

The package marked with a blue label contains uncut profiles (aluminum, stainless, plastic) – the customer needs to adjust their length.

Order No.: **OP 190000**
Sample Ltd.
Package No.: **01/02**

PROFILES

The package marked with a green label contains cut profiles (aluminum, stainless, plastic) – these already have the right length, never cut them!

Order No.: **OP 190000**
Sample Ltd.
Package No.: **01/02**

PROFILES

These packages are furthermore marked with a white label – do not cut!

**PROFILES
MADE-TO-MEASURE
! DO NOT CUT !**

3

Textile parts of the delivery = diffusers:

Boxes marked with a white label contain the textile parts of the delivery.

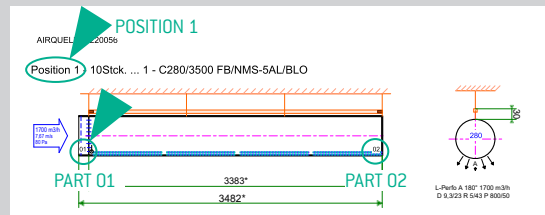
Order No.: **OP 190000**

Sample Ltd.

Package No.: **01/02**

CARTON

Individual diffuser parts are rolled up from production, and the end of the diffuser or distribution part is always located on top. They are delivered like this in a plastic bag, with inserted labels containing the number of the POSITION / PART.



4

Non-standard packing of parts of the delivery:

This usually applies to mounting material: flanges, crossbars, plastic blind ends, reels with wiring, and/or parts that are too large to be included in the box.

Order No.: **OP 190000**

Sample Ltd.

Package No.: **01/02**

UNUSUAL



Prihoda North America

7841 Bullitt drive | Mobile, AL 36619 USA | tel.: 1-855-774-4632

sales@prihoda-na.com | www.prihoda.com/us