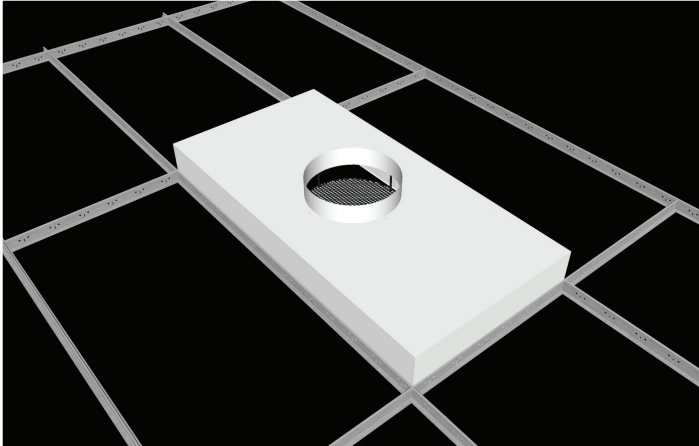


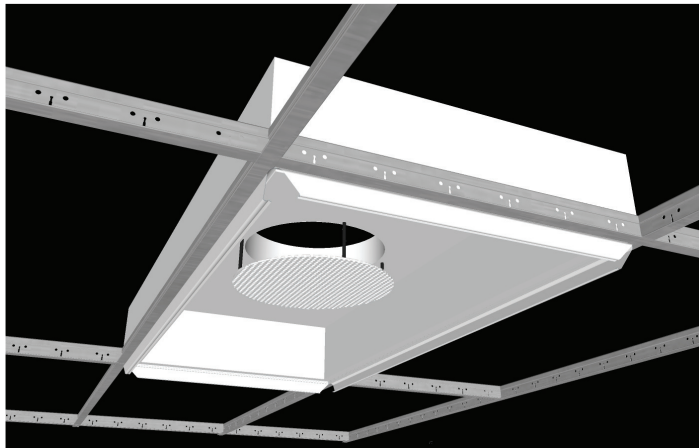
# Laminar Flow Fabric Face Diffuser (w/ Metal Plenum box)

## Installation and assembly



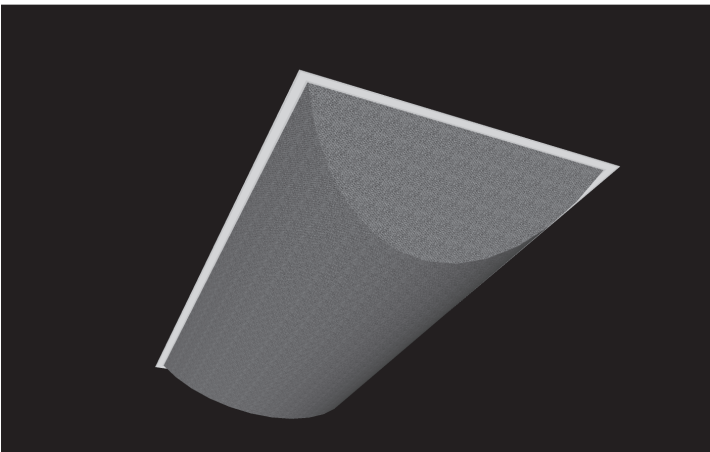
### Step 1

Seat plenum box securely and level in ceiling grid and ensure snap frame is centered inside grid opening. Suspend independently of grid with hanging tabs and vertical hangers (supplied by others) if required. Connect supply air to inlet collar.



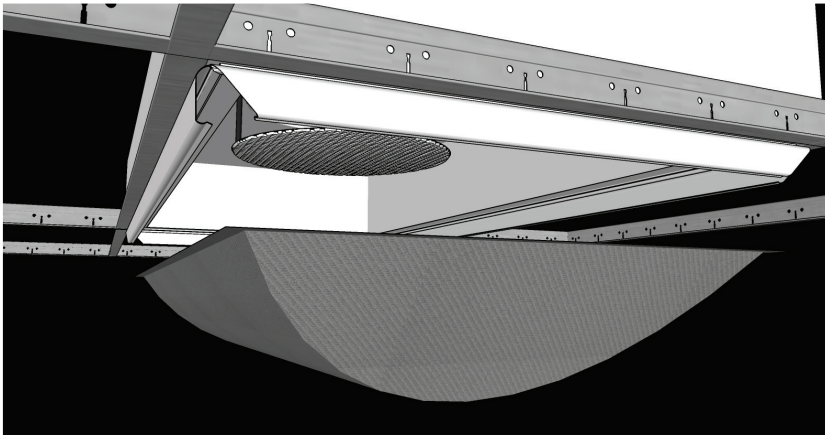
### Step 2

Open all four snap frames on plenum box exposing hook and loop fastening surface.



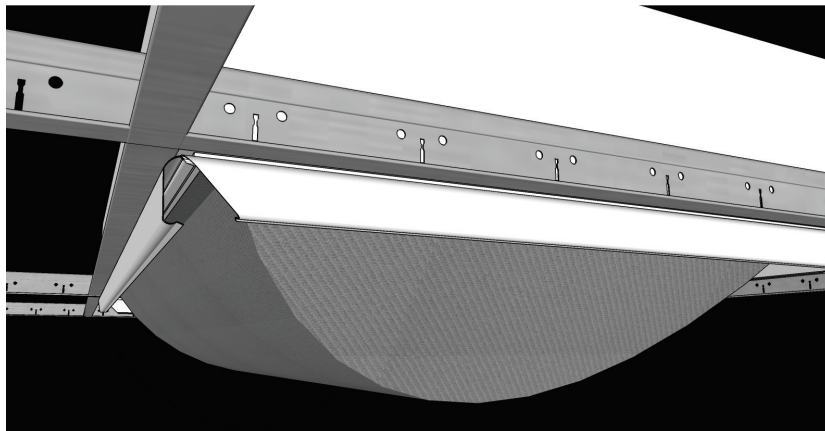
### Step 3

Apply fabric diffuser face with hook and loop side to underside of plenum box to mate up to opposing hook and loop fastening surface within snap frame.



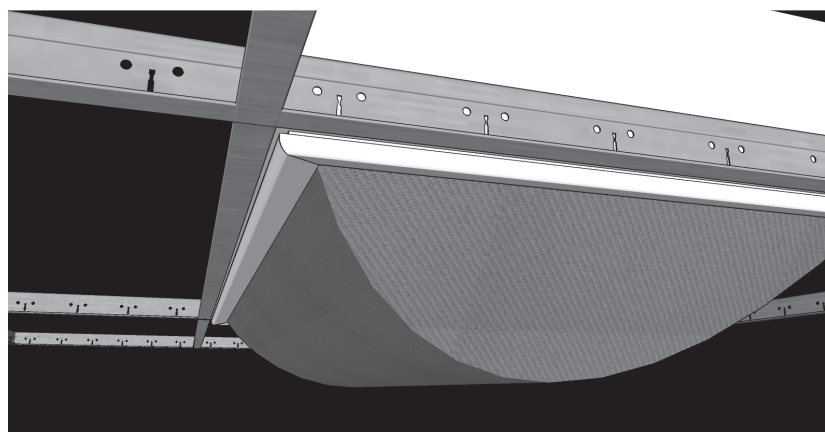
## Step 4

Start in one corner and mate the hook and loop on the fabric diffuser face to the mating hook and loop surface on the underside of the plenum box.



## Step 5

Ensure fabric diffuser face edges are flush mounted to plenum box with no wrinkles, gaps or openings in hook and loop attachment area.



## Step 6

Close all four snap frames. Installation is complete and diffuser is ready for operation.

# Maintenance and Warranty

All of our diffusers and ducts are made of high-quality, temperature and shrink resistant synthetic materials. The material used is specified when your order is processed and is indicated on documents that accompany the shipment and also indicated on the labels sewn in by the zips [STRICTLY FOLLOW THE MAINTENANCE SYMBOLS ON LABELS].

Ducts and diffusers made of permeable fabric (Premium, Classic) can be washed normally in an industrial or commercial washing machine. Impermeable fabrics (Premium) can be machine washed but only on a gentle or "delicate" cycle. NMF, NHE and NLF are to be hand washed only. If the duct or diffuser has hold open accessories such as rings (tyres), arcs (racks), braces or turn-buckles these solid elements must be removed before the washing process. Induction surface dirt on the outside of the duct or diffuser can be vacuumed off and washing may be unnecessary.

Any maintenance must strictly follow the washing label symbols sewn into every section.

1. Wash the diffusers with a regular laundry detergent (follow directions for amount recommended by detergent manufacturer). Since most dirt is collected on the inside of the duct or diffuser its generally best if the diffuser is turned inside out for washing. We advise to repeat the washing up to four times as needed or to use a stronger detergent (acc. to level of contamination). A special detergent (we can recommend one by request according to the particular dirt or application) should be used if the fabric is badly soiled.

2. A disinfectant can be used for added safety (medical or food service applications) but is not generally needed due to the antimicrobial agent already in the material (Premium/Classic). The chemical composition of the disinfectant must not harm the diffuser fabric (see maintenance symbols, no whiteners!). Observe the producer's dosage instructions.

3. Rinse the diffusers in clean water.

4. Spin-dry the diffusers gently, and either drip dry on a line or re-install them and finish drying by the air flow from the ventilator.

pos01-part02-of02  
OP123882  
1654/2012  
PMS 100% polyester



**PŘIHODA s.r.o.**

Tailor-made  
Air Ducting&Diffusers  
Za Radnici 476  
CZ 539 01 Hlinsko  
tel.: +420 469 311 856  
fax: +420 469 311 857  
info@přihoda.com  
www.přihoda.com  
Made in EU - Czechia  
in November 2012

washing label

## Legend for symbols

	Machine wash at max. temperature of 40°C (104°F), normal mechanical action, normal rinse, normal spin cycle.
	gentle/delicate machine wash only, rinse at falling temperature, light spin, max. temperature 40°C (104°F).
	Hand wash only, do not machine wash, max. temperature 40°C (104°F), handle gently.
	Do not bleach product.
	Product may be dried in rotary drum drier at reduced drying temperature.
	Do not dry the product in a rotary drum dryer.
	Iron at a max. temperature of 110°C (230°F), use caution when steam ironing.
	Do not iron product; steaming and steam processing is prohibited.
	Do not dry clean product, do not remove spots using organic solvents.
	The product is safe to dry clean using perchlorethylene and all solvents specified under the symbol F.

## Warranty

### Warranty Period

10 year	fabrics (Premiums and Classic)
2 year	membrane diffuser, fabrics NMF/NLF/NHE
2 year(max. 50 washing cycles)	fabrics PLS/NLS/PLI/NLI
12 months	All other items not mentioned above, unwoven accessories (zippers, hooks, etc), printing, assembly and accessories

The warranty period is deemed to start on the day of sale. For warranty to be valid all installation instructions must be followed in addition to regular maintenance of the supply air units and filters. Supply air must be filtered to at least EU3 (MERV5), and the ducts must maintain original operating conditions in respect to design static pressure and air flow stated in the submittal or order confirmation. Any deviation to the original design intent which may have an adverse affect on the material or accessories may void the warranty. See warranty details.

### Special conditions for diffusers with silk screening

1. Ambient Temperature within the range +10°C (50°F) to +40°C (104°F).
2. Do not iron.