

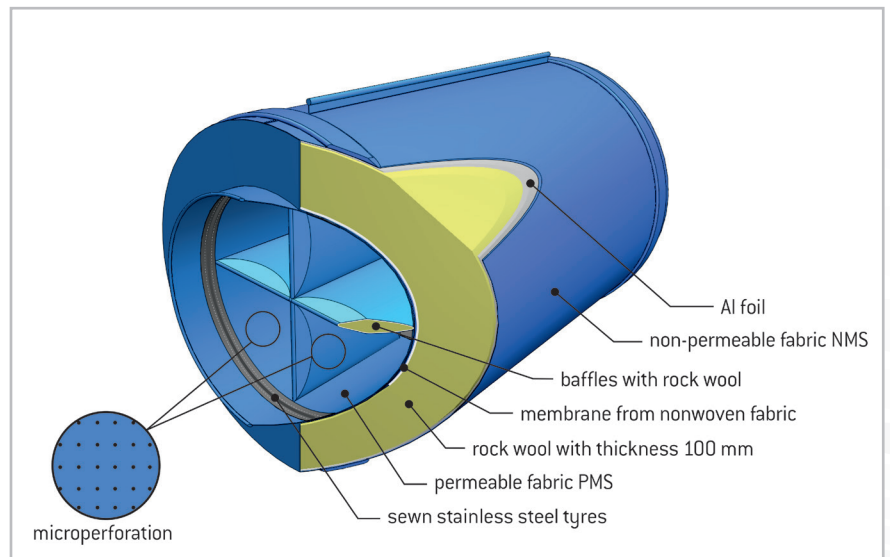
# QuieTex - Sound Attenuators

## PROBLEM: System Sound

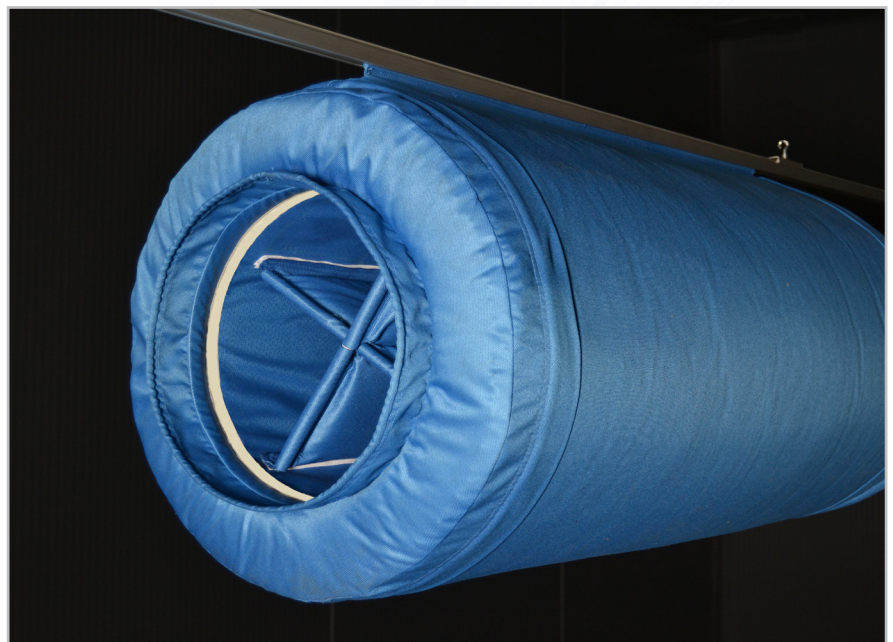
Fan noise reverberated in to the space.

## SOLUTION: Quietex - Textile Sound Attenuator

Textile Sound Attenuator Quietex is added into the duct system in order to decrease noise level generated by the fan being trasfered through ducting into the room. The basis of its unique construction is 100 mm thick aluminium enshruded rock-wool. The inner wall of the silencer is microperforated to achieve higher attenuation while rock wool insulated baffles serve the same purpose. Stability of the construction is ensured by in-sewn, full-circumference stainless steel rings. Membrane from nonwoven prevents glass fiber escapes. Quietex can be either part of the textile or metal duct system.

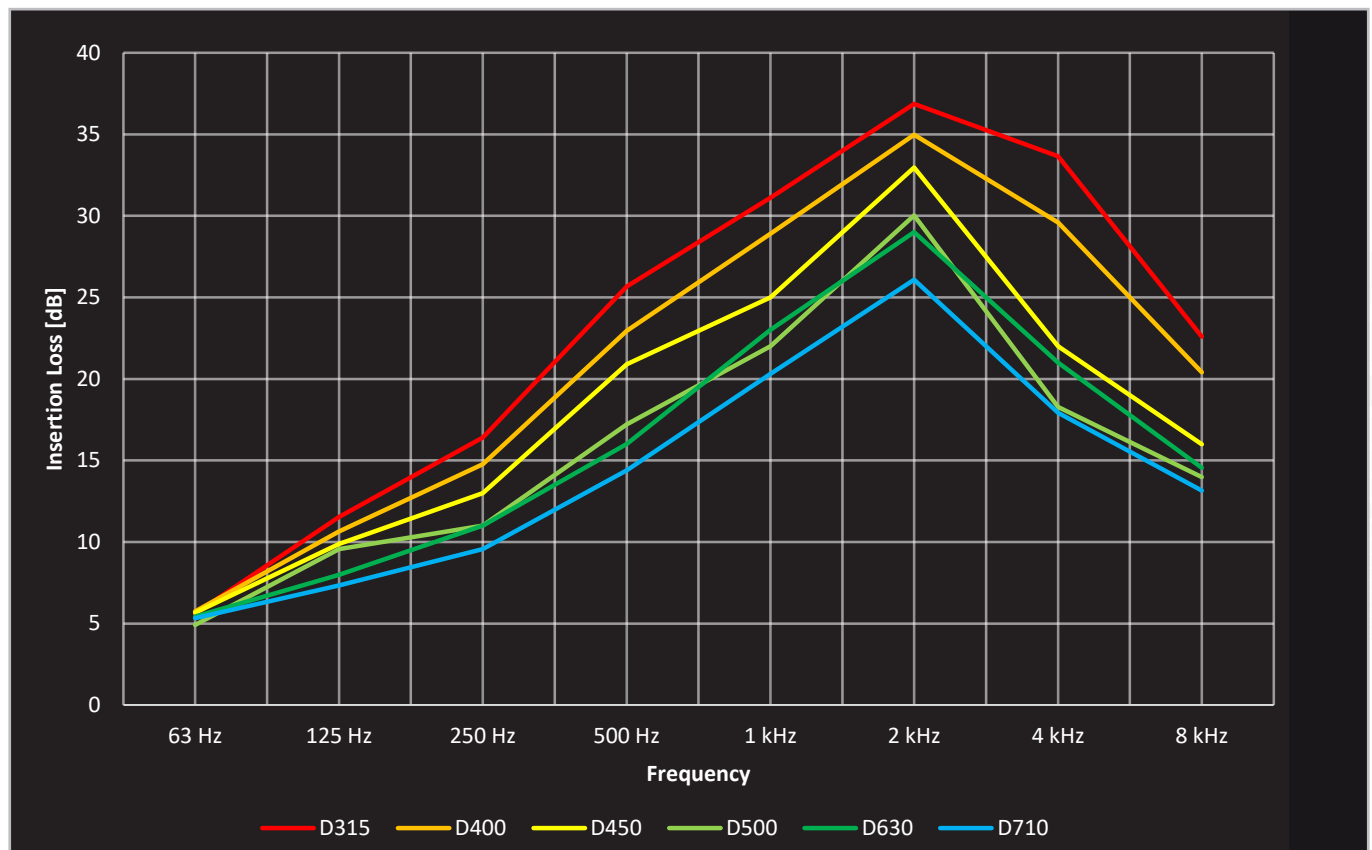


WEIGHT	
Diameter [in]	Weight [lb]
12	17
16	20
18	22
20	26
24	31
28	34



## PERFORMANCE

TEXTILE ATTENUATOR WITH BAFFLES - SOUND ATTENUATION LEVELS [dB]								
Diameter	63 Hz	125 Hz	250 Hz	500 Hz	1 kHz	2 kHz	4 kHz	8 kHz
12	6	12	16	26	31	37	34	23
16	6	11	15	23	29	35	30	20
18	6	10	13	21	25	33	22	16
20	5	10	11	17	22	30	18	14
24	5	8	11	16	23	29	21	15
28	5	7	10	14	20	26	18	13



PRESSURE LOSS OF TEXTILE SOUND ATTENUATOR			
Diameter [in]	Air flow [CFM]	v [fpm]	$\Delta P$ [in wg]
12	1081	1375	.18
20	3000	1375	.14
28	5880	1375	.17