



## Adjustable Nozzles

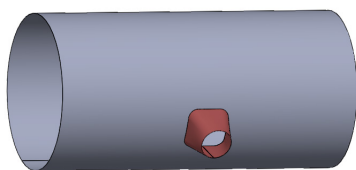
**PROBLEM:** Spot cooling required with flexibility in flow and direction.

### SOLUTION: Large Adjustable Nozzles

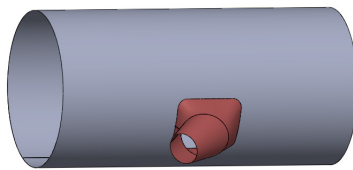
Large nozzles can achieve the longest throws of any textile air distribution option. Depending on the static pressure, volume and temperature difference throws can exceed well over 60ft. The nozzles can be straight, directed, or **adjustable**.



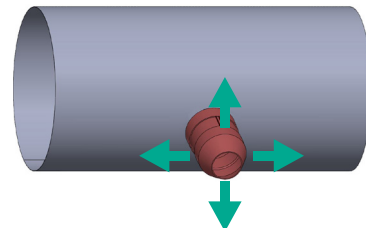
**Straight nozzle**



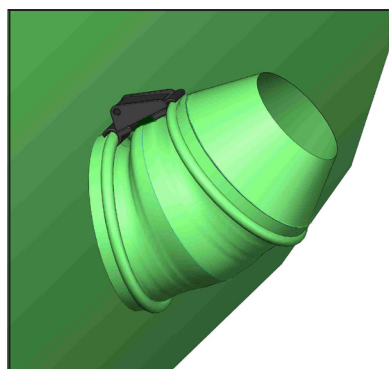
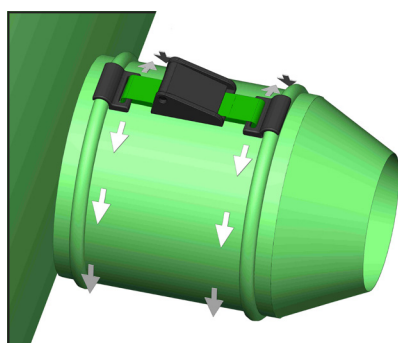
**Directed nozzle**



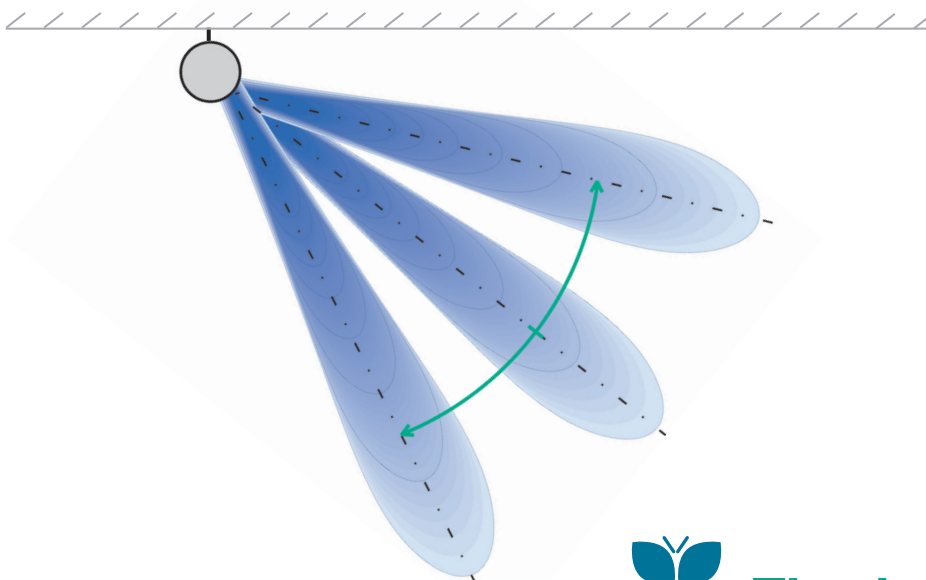
**Adjustable nozzle**



### Adjustable nozzle – basic characteristics:



The nozzle angle can be directed (bent) by adjusting the length of the straps that connect to two opposing rings near the inlet and outlet of the nozzle (30° max). The strap can be moved around the circumference of these rings as required to achieve the correct direction needed on site. The strap and rings are all concealed within a fabric cover for optimum aesthetics.





## Adjustable Nozzles

### Technical specification:

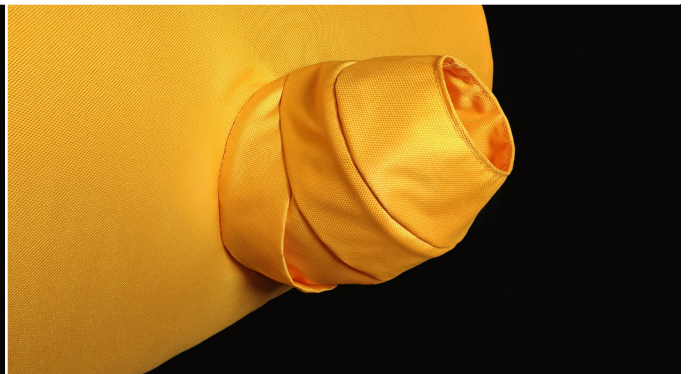
- Size  $\geq 3.2$ "
- Adjustability in range  $30^\circ$  in any direction
- Airflow adjustable by a damper(optional)

### Key Benefits:

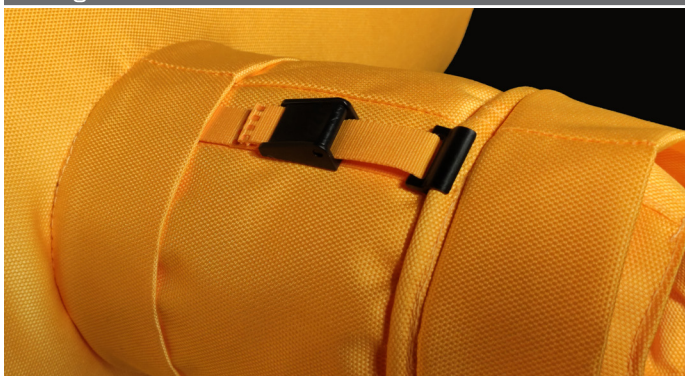
- Easy and exact setting of required airflow direction
- Possibility of airflow changes during operation
- Long throws
- Washable in a regular washing machine



Straight outlet



Re-directed airflow



Cord and clamp for adjusting



Damper for air volume